



产品手册

PRODUCTS SELECTION

XPOMATPOH 1511 2D UHPLC

XPOMATPOH 1511 2D UHPLC



Complex Analysis more Efficient

Efficiency HPLC solution

Fulfill more application scenarios and analysis requirements

2D separation, multiply improve peak capacity

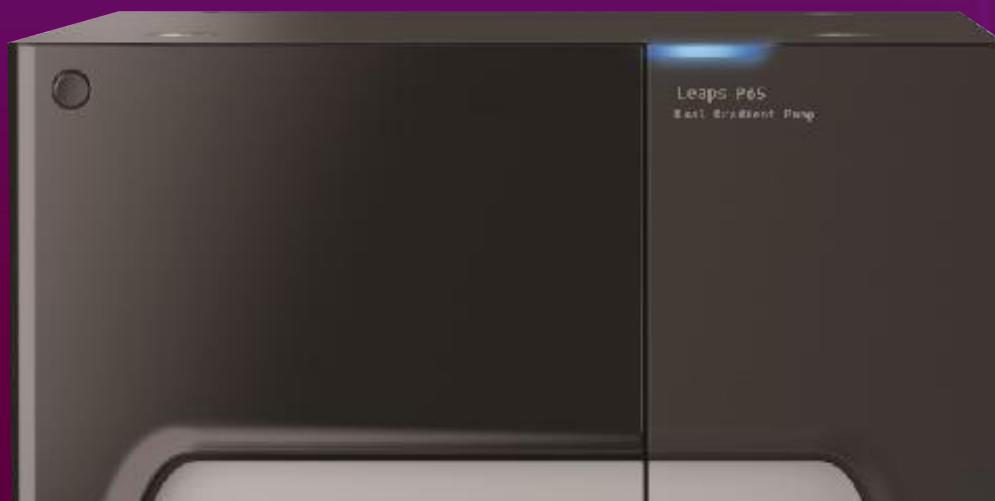
- easy to test, decrease pretreatment
- Super efficiency, quicker analysis

Unlock more complex application scenarios

- √ Analytical application of natural pharmaceutical ingredients
- √ Analytical application of toxic and harmful substance in the environment
- √ Analytical application of differential proteomics
- √ Analytical application of in vivo drug

Simple pretreatment leads multiple analysis efficiency

- Leading UHPLC analysis technology, multiple analysis efficiency
- On-line purification & enrichment
- Fulfill analysis requirements of herbal extracts, foodstuff sample or polymer synthesis products.



Model	Performance Parameter	Weight	size
P12	Constant flow isocratic pump (10500 psi)	16 Kg	550 mm(D)× 396 mm(W)× 196 mm(H)
P20	Binary pump (10500 PSI)	19 Kg	550 mm(D)× 396 mm(W)× 196 mm(H)
P22	Binary pump (10500 PSI, 2CH degassing unit)	24 Kg	550 mm(D)× 396 mm(W)× 196 mm(H)
P40	Quaternary pump (10500 PSI, 4CH degassing unit)	18 Kg	550 mm(D)× 396 mm(W)× 196 mm(H)
P60	Dual ternary gradient pump (10500 PSI, 6CH degassing unit, ternary gradient valve)	24 Kg	550 mm(D)× 396 mm(W)× 196 mm(H)
UP25	Binary pump (16000 PSI, 2CH degassing unit, ternary gradient valve)	24 Kg	550 mm(D)× 396 mm(W)× 196 mm(H)
P10	Isocratic pump 10500 PSI / >72Mpa # Small volume	8 Kg	320 mm(D)× 135 mm(W)× 147mm(H)
P42	Quaternary pump 10500 PSI / >72Mpa、 5CH degasser	18 Kg	550 mm(D)× 396 mm(W)× 196 mm(H)

Model	Performance Parameter	Weight	size
A10	Auto sampler, 9000 PSI	22 Kg	550 mm(D)× 396 mm(W)× 281 mm(H)
A20	Auto sampler, 18000 PSI	22 Kg	550 mm(D)× 396 mm(W)× 281 mm(H)
A50	Auto sampler, 9000 PSI, high injection volume till 1ml	22 Kg	550 mm(D)× 396 mm(W)× 281 mm(H)
A60	Auto sampler, 9000 PSI, Integral-Loop	23 Kg	718 mm(D)×396 mm(W)× 281 mm(H)
A65	Auto sampler, 18000 PSI, Integral-Loop	23 Kg	718 mm(D)×396 mm(W)× 281 mm(H)
Manual injector	Manual injector With: 7725i, 20ul loop, valve holder, syringe.	0.5 Kg	130mm(D)×185 (W) ×95mm(H)
A10C	Auto sample Inhalation 9000PSI, Standard # with cooling function	26 Kg	718 mm(D)×396 mm(W)× 281 mm(H)
A20C	Auto sample Inhalation18000PSI # cooling function	26 Kg	718 mm(D)×396 mm(W)× 281 mm(H)
A50C	Auto sample Inhalation9000 PSI, Mass injection 1mL # cooling function	26 Kg	718 mm(D)×396 mm(W)× 281 mm(H)
A60C	Auto sampler Integral-Loop 9000 PSI, 4X sample tray, 100uL quantitative pump # cooling function	24 Kg	718 mm(D)×396 mm(W)× 281 mm(H)
A65C	Auto sampler Integral-Loop Integral-Loop, 4X sample tray, 100uL quantitative pump # cooling function	24 Kg	718 mm(D)×396 mm(W)× 281 mm(H)

Columns switch to achieve perfect samples testing

Multi-columns switch system can reach lower density sample, different kinds of samples be tested synchronously.

- 1D column and 2D column automatically switch by automatic valve
- Totally automatic sample loading sample, greatly improve usability
- Center cutting, multi-center cutting and high resolution to reach quick analysis result
- Easy to accomplish 1D & 2D mode automatic switch, adopt the correct separation performance as complexity of samples.

Model	Performance Parameter	Weight	size
C10	Column oven Ambient+5 C-85 C	15 Kg	543 mm(D)× 150 mm(W)× 475 mm(H)
C15	Column oven Ambient+5 C-85 C, 0.003 inch tubing	15 Kg	543 mm(D)× 150 mm(W)× 475 mm(H)
C12	Column oven 4 C-85 C	17 Kg	543 mm(D)× 150 mm(W)× 475 mm(H)
C16	Column oven 4 C-85 C, 0.003 inch tubing	17 Kg	543 mm(D)× 150 mm(W)× 475 mm(H)

Compatibility

- interference method transfer, seamless upgrade
- Perfect modules compatibility, easy update to prevent your investment.
- Parallel two column and series SPE, efficiency greatly improved
- dual ternary pump, supporting parallel independent operation and post column derivative functions

Excellent testing performance and reliable result

Diode array detector

- 1024 Pixels, wavelength 190~800nm; eliminate background noise, shift calibration function
- optional split width is 1.2nm and 8nm, output high resolution spectroscopy, more accurate monitor data
- 12 channels wavelength can be monitored, every channel sample wavelength, sample bandwidth, reference wavelength and bandwidth are option.
- 3D spectrogram monitoring, peak purity calculating function



UV-VIS Detector

Optical path switch automatically, wavelength is 190~900nm

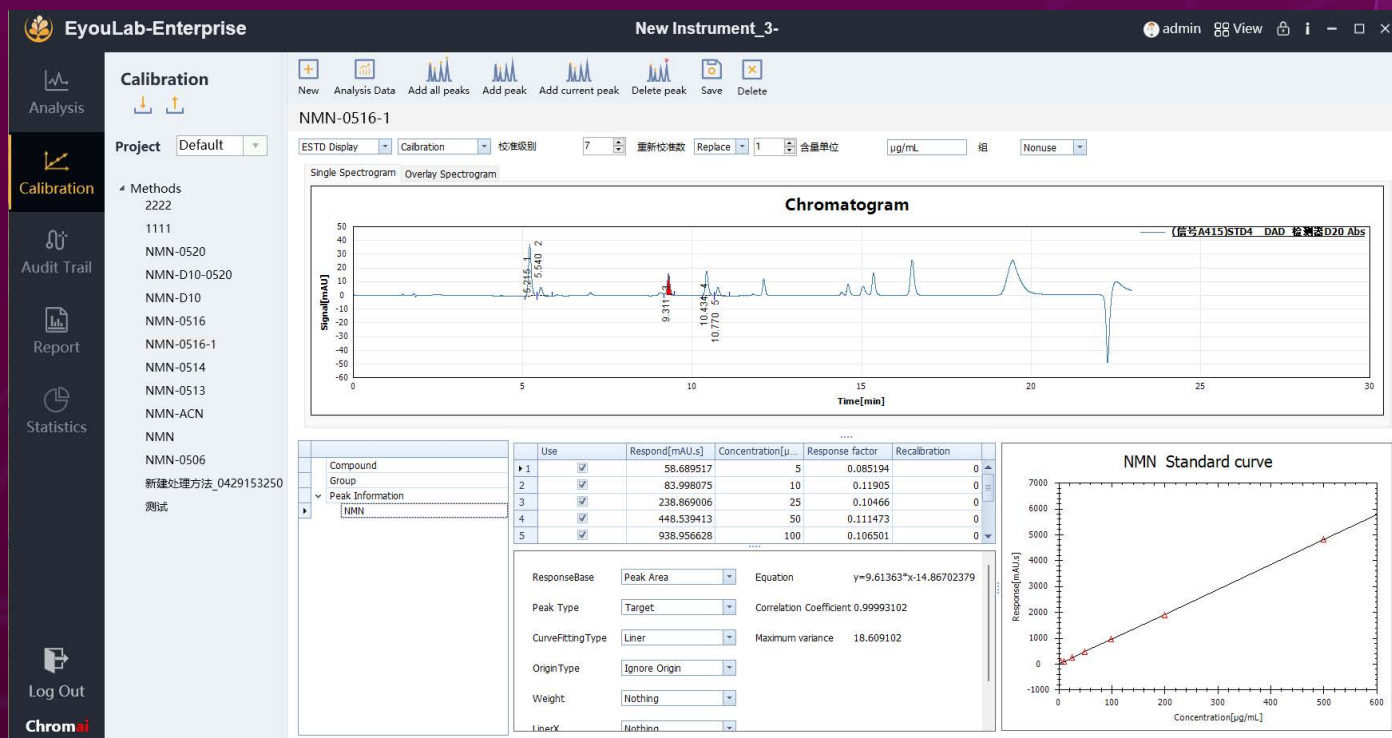
- Up to 100Hz data acquisition rate, even extremely narrow peaks can be monitored.
- A linear range of 2.5au is equally adept for high concentration samples
- Standard wavelength time program, wavelength switching detection
- The module is easy to maintain, the light source replacement is convenient, and multiple flow pools can be selected



Model	Performance Parameter	Weight	size
D08	UV-vis detector 190nm-640nm	15 Kg	550 mm(D)× 396 mm(W)× 196 mm(H)
D10	UV VIS Detector 190nm-900nm	15 Kg	550 mm(D)× 396 mm(W)× 196 mm(H)
D15	UV VIS Detector 190nm-900nm	15 Kg	550 mm(D)× 396 mm(W)× 196 mm(H)
D20	Diode Array Detector 190nm-640nm	18 Kg	550 mm(D)× 396 mm(W)× 196 mm(H)
D22	Diode-array Detector 1024 pixels 190nm-800nm	18 Kg	550 mm(D)× 396 mm(W)× 196 mm(H)
D23	Diode-array Detector 1024 pixels 190nm-640nm	18 Kg	550 mm(D)× 396 mm(W)× 196 mm(H)
D24	Diode-array Detector 1024 pixels 190nm-800nm	18Kg	550 mm(D)× 396 mm(W)× 196 mm(H)
D25	Diode Array Detector 190nm-640nm Variable slit	18 Kg	550 mm(D)× 396 mm(W)× 196 mm(H)

EyouLab CDS

The new generation EyouLab intelligent chromatographic data system is based on database technology for efficient and comprehensive management, fully complying with regulatory compliance requirements such as FDA 21CFR Part 11, GMP, GLP, etc. It has rich and powerful instrument control functions, and has been extended to sample pretreatment and precision medical fields. Through dozens of proprietary technologies, the controlled instruments have intelligent interaction, refined processes, and powerful data analysis capabilities, which can effectively guide customers to ensure that the required data can be effectively and accurately completed through simple operations. EyouLab provides multiple versions of deployment, including standalone, enterprise network, and cloud service versions, which can greatly enhance the overall capabilities of customer application laboratories. Through visual dashboards, data monitoring and management, online diagnosis and maintenance, and method library interaction calls can be achieved. Intelligent and user-friendly, reducing errors, and improving overall laboratory efficiency





Contact

UVTech

Add: 2nd Floor, Building 3, No. 1 Chaoqian Rd, Changping, Beijing, China PRC.

TEL:18613365565

MAIL: info@uvtech-cc.com